

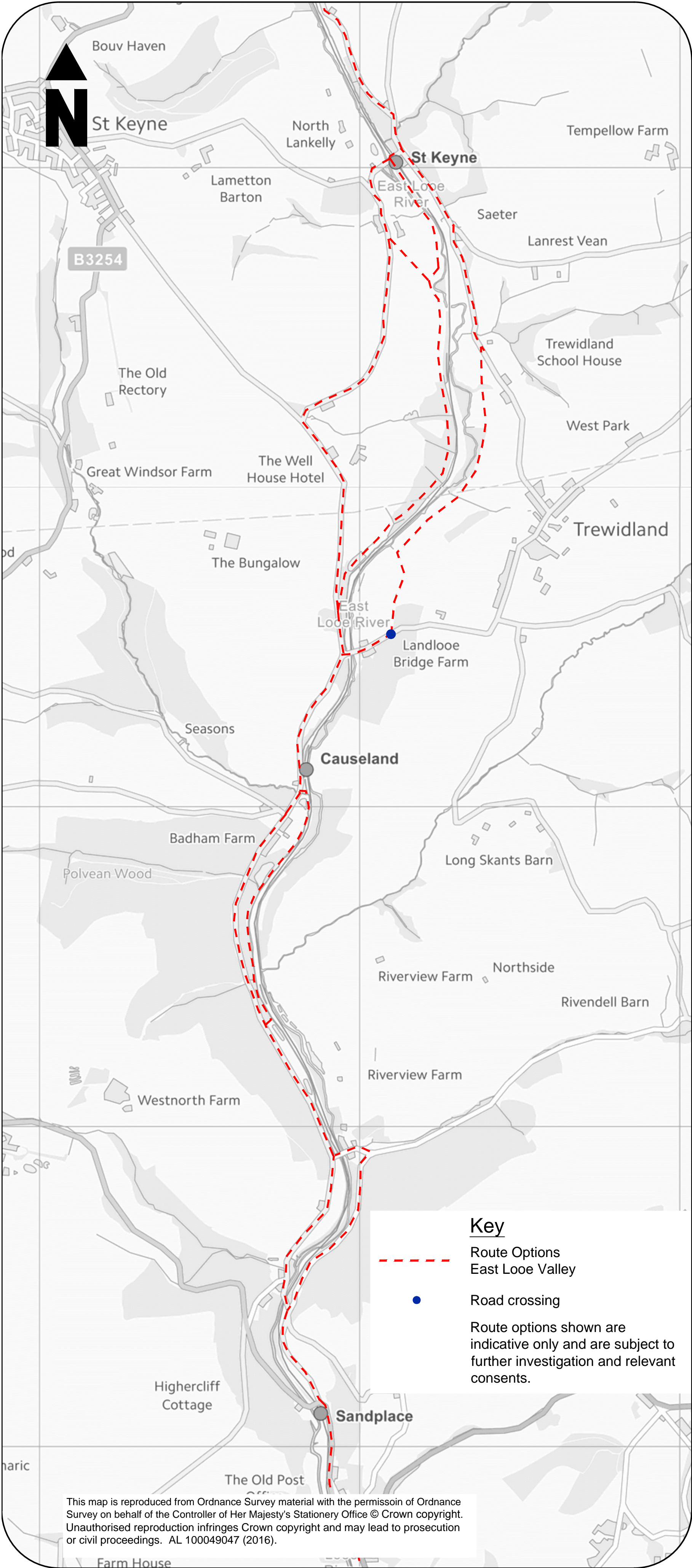


Photo by Devon & Cornwall Rail Partnership

East and West Looe Valleys Trail St Keyne to Sandplace

Route Description

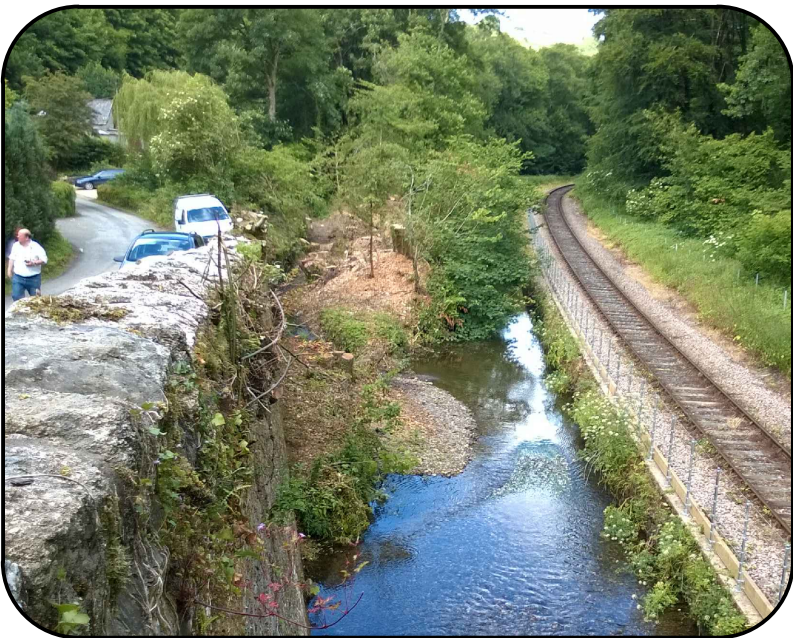
This section of the East Looe Valley Trail travels south from St Keyne Station to Sandplace, utilising existing quiet lanes, off road tracks and new traffic free sections in the valley bottom with gentle gradients.



St Keyne Station



Landlooe



Canal



Sandplace

Key Issues and Opportunities

Route

- Uses quiet lane and off route tracks.
- Potential for multi-use sections
- New traffic free section with gentle gradients along valley bottom from St Keyne Station to Landlooe and served by the rail halts.

Environment

- A diverse, intimate and rich farmed landscape with extensive areas of fen, marsh, pond and wet woodland habitats in valley bottom.
- Bats forage extensively along the valley.
- River and watercourse with veteran trees, woodland and scrub. Otters use the river corridor.
- Enhancement opportunities include managing the wetlands and woodlands and the control of Himalayan Balsam.

Heritage

- Significant canal heritage present at Badham, Landlooe, St Keyne Station and Sandplace.
- Conservation and restoration projects e.g. locks and limekilns.
- Telling the valley story - social and agricultural history.



The European Agricultural Fund
for Rural Development: Europe
investing in rural areas

