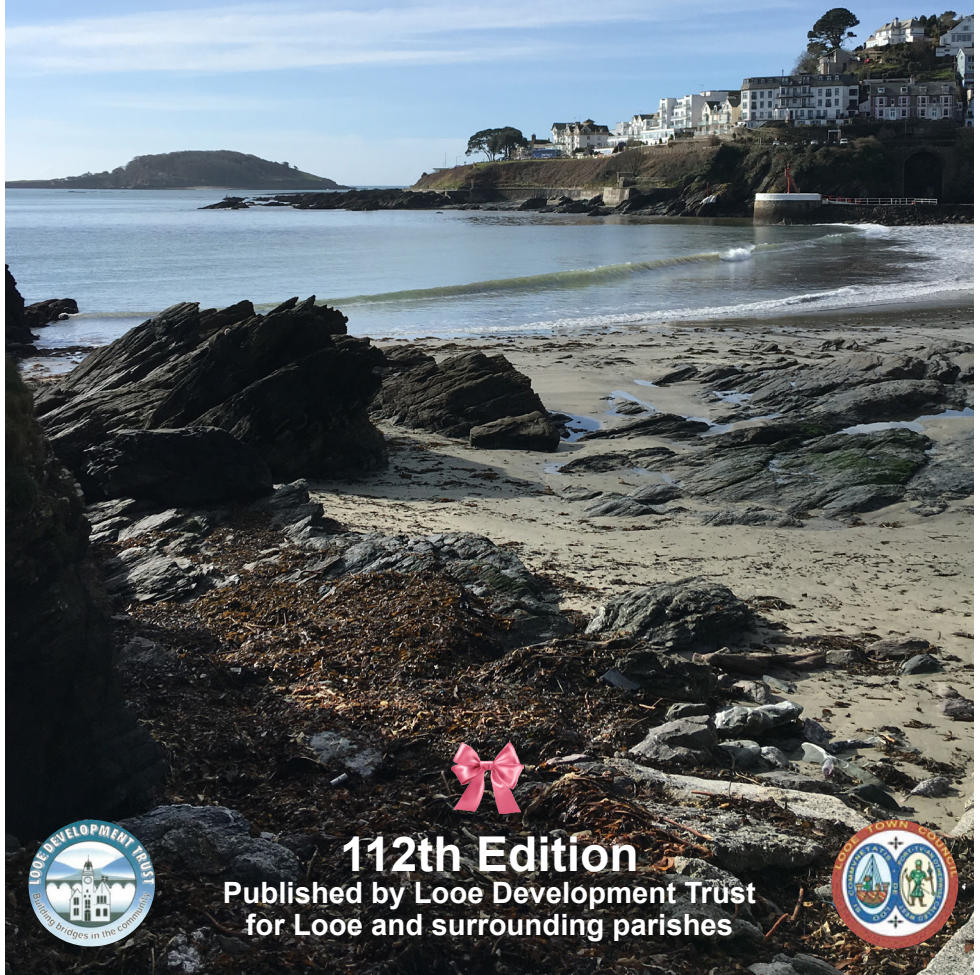


LOOE COMMUNITY NEWS

February - March 2019



112th Edition

Published by Looe Development Trust
for Looe and surrounding parishes





Ann, Micky, & Bryony welcome you to The Crabb Pot for interiors, lighting, soft furnishings, dining and kitchen, wall art and mirrors, jewellery and crafts from Cornwall and the South West, wooden toys, and stylish seaside gifts. Cards, wrapping paper, and gift tokens also available.

The Crabb Pot, Higher Market Street, East Looe, PL13 1BS

01503 598356

thecrabbpotlooe@gmail.com

www.thecrabbpot.co.uk

and find us on Facebook

Trelawney FIRE & SECURITY

Telephone.

0800 999 2443

For a FREE Quotation

- Intruder Alarms
- Fire Alarms
- CCTV
- Access Control
- Gates & Barriers
- 24/7 maintenance and support packages of all types of systems.



Trelawney Fire & Security has provided Fire & Security services to businesses and domestic customer's for over 20 years throughout Cornwall. Please contact us for free advice and to obtain a no obligation free quotation for Burglar Alarms, Fire Alarms, CCTV, Access Control, and Barrier & Gates.

We offer good value for money proven Fire & Security systems for all types of premises. If you have an existing fire or security system please contact us to discuss very competitive 24/7 maintenance and support packages.

Fully approved to Police and Insurance standards we provide value for money and a high level of customer service.



Simplifying Fire & Security

South West Cornwall
Hayle office
01736 752417

South East Cornwall
Looe office
01503 263206

www.tfs-sw.co.uk



A country house by the sea



Horizons Restaurant and bar
FREE WiFi
Heated Outdoor Swimming Pool
Freeview TV
Beautifully manicured gardens and terraces
Family rooms
Balconies with stunning sea views
FREE Telephone calls

Built in 1896 as a private residence, The Fieldhead is now a traditional, warm and friendly country house style hotel.

Set in 1½ acres of gardens with most rooms having balconies and fabulous sea views. The hotel is a short walk into the town of Looe, which provides an ideal base to visit the many National Trust properties and attractions of Cornwall, including The Eden Project.

Please call us or visit the website to find out our latest offers.

01503 262689

www.fieldheadhotel.co.uk



The Fieldhead Hotel
Portuan Rd
West Looe
Cornwall
PL13 2DR

FIELDHEAD HOTEL



NEWS FROM THE EAST LOOE TOWN TRUST



2019 is upon us and for the Trust we start the year with some changes and quite a lot of scaffolding!

Our Board of Trustees has said goodbye to Roy Hendy, and welcomed Laurie Tansley, Claire Lyden and Sam Tanner.

As you will have noticed, there is extensive scaffolding still on the Guildhall. This was originally put in place to enable the Trust to install the last of four lights to illuminate the clock tower, give our flagpole a lick of paint, repair the window surrounds and generally tidy up the front of the building. Unfortunately, as is so often the case with older buildings, once we had access to the upper part of the building, we found there was decay of the stonework. Fore Street gets the worst of the driving rain, which has eroded some of the Bath stone that the building is made of. We have now had a specialist survey of the inside and out of the Guildhall and, whilst the damage is not as severe as we had feared, the Trust will need to invest in repairs to the roof, walls and inside structure of the clock tower, so will be looking for grant funding to help cover these costs in 2019.

Looe Town Council have given us notice of their intention to vacate the downstairs Guildhall office space and Tourist Information Centre that they currently rent from the Trust. This will have significant implications for our finances and we shall be considering alternative uses that will generate much needed income for the Trust.

Our Community Tea Room, which is nestled between the Tourist Information Centre and our office entrance in the Guildhall is also being redecorated, to make it more welcoming. The Tea Room is available to anyone who would like to have a chat over a cup of tea or coffee and is open Monday-Saturday morning 10am-12.30pm, so if you are passing, please drop in.

The Old Guildhall Museum & Gaol had some more good news at the end of the year: the clock hand from St Mary's Church has been shortlisted for the Cornwall Museums Heritage Awards 'Object of the Year' category. You can find out about the clock hand – including why there is only one – and help us to win for a second year, by voting for our object on:

www.cornwallmuseumspartnership.org.uk/vote-now-for-cornish-object-of-the-year/

Our Museum will open again at the end of March, where you will be able to see the clock hand and the other fascinating objects that tell the history of our town.

The Chairman and Trustees

WEST LOOE PLAYGROUP



**PLACES
AVAILABLE FOR
2, 3, & 4
YEAR OLDS**



Monday - Friday 9.00am - 3.30pm
Lunch Club: Monday -Thursday 12.00pm - 12.30pm
30 Hours Funded places available

Telephone 01503 265623 / 07976 393133
for a free taster session or for more information
www.westlooeplaygroup.co.uk
email: admin@westlooeplaygroup.co.uk

Sheila's

School of Dancing

**LATIN AMERICAN • BALLROOM
DISCO • DANCE-A-CISE**
for ages 3 years to 83 years

Sheila Brock NATD

Tel: 01503 263079 Mobile: 07866 771429

Dog House Canine Massage Therapy

Est. 2012

Julie Green, Canine Massage Therapist based in Seaton, specialising in non-invasive holistic treatments including Sports and Swedish Massage, Deep Tissue, Myofascial Release, Acupressure, Canine Reflexology and Reiki for your dogs. Helps dogs suffering from arthritis, stiffness and intermittent lameness. Rehabilitates dogs after surgery. Call Julie to discuss how she can help you and your best friend.



Tel: 01503 250047 Mob: 07931 365162
www.doghousecaninemassagetherapy.co.uk
or find me on Facebook

Pelynt Boarding Kennels & Cattery

Near Looe
01503 220915



Cattery set away from kennels in tranquil garden surroundings



Viewing welcome



**NOT JUST
TRAVEL**
HELEN HART

Looe's
local independent
travel agent

I'm not just a normal travel agent.
Unbeatable experience, more choice, better service
and great value for money.

Tel: 07983403198

helen.hart@notjusttravel.com

www.notjusttravel.com/byhelen

Follow me on social media @NJThelen



PAINT A POT

Fore Street, East Looe

Design and paint your own decorative
ceramic pottery in a working studio.

Advice and help available.

We supply all materials and glaze and fire your
piece to give a lasting professional finish

100's of
designs
available
Easy techniques
- amazing
results!



Packing &
postal service
Gift
Vouchers

Tel: 01503 262763



R Mears & Sons Chimney Sweeps & Stove Installation

Established over 30 years

Vac Brush. Full CCTV investigations.

Pots, Cowls & Bird Protection fitted. Chimneys Lined.

Solid Fuel Appliances, Rayburns, Woodburners,

Stoves, etc serviced. Fully Insured.

Tel: 01840 261221 Tavistock: 01822 664554

Mob: 07737 533392

www.sweepdevon.com



There were two shouts between 31st October and 12th January. More information at www.looelifeboats.co.uk/recentshouts

Dates to Remember

February:

Saturday 16th to Sunday 24th RNLI Shop opens for Half Term

March:

Thursday 14th 10.30am Shop Volunteers meeting in the Lifeboat Station Crew Room.

Thursday 23rd RNLI Shop opens full time for the season.

Saturday 21st 11am Boathouse Guides meeting in the Crew Room.

Saturday 30th RNLI Community Safety stand and Harbour Commission Boat Jumble at West Looe.

Join Us

We now have a small number of volunteer vacancies for the following teams:

Boathouse Tour Guides – help us save lives at sea by enabling visitors to see the RNLI boathouse at first hand, showing visitors our boats and launch vehicles.

Shop Volunteers – The purchase of souvenirs and gifts has always been a popular way for the public to support the RNLI. Our shop volunteers keep our shops open.

Fundraiser – Help us to fundraise. There is something for everyone, by yourself, in a group, at work, at school, in celebration, in tribute.

Or become an **Occasional Volunteer** – Street collector, event marshal, cheerer, see what you can do to save lives at sea with just a few hours to spare.

More information at www.looelifeboats.co.uk

LISKEARD ARTS

Liskeard Arts (Registered charity No. 1097024) is the local branch of the nationwide Arts Society. Members and visitors to our monthly illustrated talks come from all over South East Cornwall. Our monthly meetings are held at 7.30pm at The Public Hall, West Street, Liskeard PL14 6BW from September to May each year.

On 12th February 2019 the illustrated talk is "Inspired By Stonehenge" and on 12th March we have "Masonry, Manuscripts and Music".

Detailed information is available at www.liskeardartsociety.org.uk.



LOOE AND DISTRICT FLOWER CLUB

We are a friendly group of floral enthusiasts who meet every first Tuesday of the month, 2pm at Pelynt Village Hall. Between us we have a wide range of expertise from the very experienced florist to the novice. Our shared passion is the beauty of flowers and how we can develop and share our skills to create lovely floral exhibits.

As a club we also support the development of skills through workshops, competitions, collaborative work and are inspired by visiting demonstrators. Our spring demonstrators are Sheila Hadlow on March 5th, Angela Hyland on April 2nd and Ian Facey Macleod on May 7th. Visitors are welcome to attend for a charge of £5. A great way to spend an afternoon – tea and a chat and view beautiful flower arranging.

You can now find us on Facebook.

The Looe and District Flower Club is affiliated with the National Association of Flower Arranging Societies – NAFAS.

CHRISTMAS 2018

On behalf of so many, I would like to thank everyone involved with the organisation, lighting, preparation and presentation of the Christmas period and processions, Santa's arrival, Fun Run, New Year's Eve, Fireworks and the Charity swim on New Year's Day, apart from all the other full diary events for the month including the services, carols, shows, fairs and festive themed activities that took place.

For the first time in many years, the weather took its toll on the weekend events with the Lantern Procession, Santa's arrival and stalls bearing the brunt of the atrocious conditions.

Heartfelt sympathies to all involved and to those who braved the elements to take part or to visit.

Fortunately that sort of weather does not happen every year.

Thank you all, once again.

Dave Holford

TEAM EFFORT PROVIDES NEW CLUBHOUSE FOR LOOE

A group of volunteer fundraisers are delighted with the brand new clubhouse for Looe Town Football Club. The finishing touches are being added to the Club's much-needed new premises which will provide essential facilities for visiting teams, home players and the wider community. The Club is looking forward to opening the clubhouse opening in the Spring.

Team visits to other clubs highlighted the lack of facilities for the Club, which was founded in Looe in 1902. The lack of basic amenities was apparent such as hot showers after the game, a kitchen for teas and coffees and a shelter for spectators, often needed throughout the winter months. The first phase of redevelopment last year saw new showers and toilets installed within the existing building at Barbican Sports Field, while planning permission was sought for a new building to serve as the clubhouse. It is the first time Looe Town Football Club has had a permanent home in over 100 years.

The new premises offer disabled toilet access, a large social space and a kitchen for those all-important refreshments during and after matches. Lucy Taylor, Chairperson of the Fundraising Committee is keen to have a kitchen to work from during the matches, *'For so long we have been working out of one of the changing rooms and had to fill an urn using a few kettles and carry it and all of the cups out to the pitch, balanced on a fold up table, often with the wind or rain howling, it's not been ideal!'* But the weekly income generated from teas and coffees has contributed to the new facilities. Now the volunteers will have somewhere dry and warm to work from and they will be able to offer hot food and drink while still being able to watch the matches from the clubhouse.

Lucy helped to set up the Fundraising Committee seven years ago along with a group of other parent volunteers, to provide the Football Club with better facilities. *'We noticed that although we had the largest number of members in comparison to other clubs in the town, our facilities were probably some of the worst. So we decided to do something about it.'* Fundraising activity has included small donations from a few pounds, raffles, discos, football tournaments, sponsored marathons and other sporting activities. Larger funding came from successful grant applications and support from local businesses, East Looe Town Trust, West Looe Town Trust and match funding from Virador and the Looe Town Council's Mayor's Fund on behalf of Armand Toms. Previous support to refurbish the existing changing rooms also came from Suez Community Trust. *'I've been really touched by the way Looe businesses and locals have offered support and donations and we really couldn't have done this without them. Hopefully, we are now in a position to give something back to the community with our new facilities.'*

As well as the Club's many uses, the clubhouse will be available to hire for parties, group meetings and there is already interest in running a pilates class. After the weekend matches, teams can stay for lunch and if they haven't had enough football, they can watch premiership matches on the big screen and dream of being the next star player.

HAPPY NEW YEAR FROM THE TEAM AT CORNWALL AIR AMBULANCE



2018 was another incredibly busy year for the crew and team of Cornwall Air Ambulance, with a total of 1,105 missions, easily surpassing 2017.

While the focus has been around the New Heli Appeal and bringing a bigger and faster helicopter to Cornwall by 2020, the day-to-day operations continue to make a huge difference to patients and their families in Cornwall. With no government funding, this wouldn't be possible without the continued support of people like you, our incredible supporters and local communities. Thank you.

In 2019, the New Heli Appeal has taken on a new-found urgency as the deadline to raise £2.5m approaches. If you can help in any way, from fundraising events to taking part in a challenge, please get in touch. You can help save more time and more lives in Cornwall.

**Find out how you can support the New Heli Appeal by visiting the website:
www.cornwallairambulance.org**

CORNWALL AIR AMBULANCE CHALLENGES

New Year, new you!

After the indulgence of Christmas, many of us set ourselves a resolution for the new year. If you're setting yourself a challenge, why not double-up on the good feeling by supporting Cornwall Air Ambulance while you do it! The first five challenge events are in the diary, offering short trips or long challenges in the UK, Europe and even Asia. With different funding options available, you can fundraise the cost of your trip as well as raising vital additional money to help keep Cornwall Air Ambulance flying and saving lives in Cornwall.

Challenges on offer in 2019 are:

- **Hadrian's Wall Trek** – 28th-30th June – Step back in time on this epic 3-day trek.
- **London to Paris Cycle Tour de France Finale** – 24th-28th July – Cycle 308 miles from capital to capital and witness the finale of the world's greatest cycle race.
- **Mt Toubkal Trek, Morocco** – 7th-11th August – Trek through the Atlas Mountains and summit North Africa's highest peak.
- **The Alps Trek** – 4th-8th September – See the beauty of three countries in three days!
- **Dalai Lama Trek, India** – 24th October - 3rd November – Explore the spiritual home of the Dalai Lama – Dharamshala in India.

Rather not venture too far? Why not try a UK challenge!

- **Cornwall Air Ambulance Skydive** – 6th April and 3rd August – £50 to register. Min. sponsorship: £395.
- **Trekfest 25 or 50km Brecon Beacons** – 6th July – £60 (25km) or £70 (50km) to register. Min. sponsorship: £180 for 25km; £330 for 50km.
- **Run for Team CAAT!** – Sign up for a 10k, half or full marathon and run in aid of Cornwall Air Ambulance!

For information about any of the 2019 challenges:

Contact Sarah Mitchell: on 01637889926

or email: sarah.mitchell@cornwallairambulancetrust.org

or go to www.cornwallairambulancetrust.org/get-involved/challenges

LEARN MORE ABOUT THE HISTORY OF OUR COASTAL COMMUNITIES

Do you want to know more about the history of Looe, Fowey, Polperro and Mevagissey? These ancient ports have a wealth of fascinating history. If you want to learn more and then have the chance to share that knowledge with visitors then join our course. Cornish Riviera guides are running a one-off course for potential tourist guides in the area.

Guided town walks are popular and encourage visitors to develop a deeper appreciation of our beautiful sites and the fascinating characters who lived here. All of this encourages responsible tourism. Based on experience of the highly popular guided walks in Fowey and Polruan and other guided walks run in the various coastal locations, Cornish Riviera guides are running a course in 2019.

The weekly course is planned to start in April and run for six months with a break during August. It will feature talks from specialists on various topics and guided walks in the area.

Lynn Goold, who is a leading figure in tourism in Cornwall, has seen demand increase over the years, 'We organised a course for a group of guides six years ago and have frequently been asked if we plan to repeat it. It really is an enjoyable way to share your passion for the wonderful places in which we live.'

The course will be led by Lynn together with Dr Helen Doe, a noted academic historian and author, and will feature guest lecturers and guided walks in local areas to help the participants discover local history.

If you are interested in joining this group
email cornishriviera@gmail.com or telephone 07802 201170

COFFEE CAKE CREATE

01503 273408

Shop 9, The Coombes
Polperro, PL132RQ
www.coffeecakecreate.net

Nautically Themed Coffee Shop in the heart of Polperro.
Offering Great Coffee & Cake plus various Art workshops in a relaxed environment: with chunky sofas and local art.
Catering for Vegan, Dairy free and Gluten free diets

- Life Drawing every Thursday evening
- Story- Time & activity every Sunday
- Pop in & Create activities available every day ages 3+
- Creative Classes & Visiting Artist workshops for Adults & Teens





THE BENEFICE OF LOOE & MORVAL

www.church.looe.org



	St. Nicholas	St. Martin's	St. Wenna, Morval
1 st Sunday	8am Communion (BCP) 9.30am Communion	11am Cafe Church (Hall)	11am Communion
2 nd Sunday	9.30am Morning Prayer	11am Communion (Church)	11am Family Service
3 rd Sunday	9.30am Communion	11am Sunday Live (Hall)	11am Communion
4 th Sunday	9.30am Sunday Live	11am Communion (Church)	11am Morning Prayer

5th Sundays, 10.30am see notice board for venues.
Thursdays, 10am Communion, St. Nicholas

Every 2nd Friday of the month

LOOE COMMUNITY MEMORY CAFÉ & DROP IN

Stimulating games, chat, entertainment, singing & a great afternoon tea!
No charge. Elderly & lonely especially welcome. Enquiries 01503 264846.

Dear friends

The Christmas celebrations are only just over and already we're enjoying daffodils in the garden - it appears that it isn't only politics that's all mixed up! In times of great uncertainty, when everything seems in a state of flux, it can be difficult to recognise the God who never changes, who is totally trustworthy and yet this is exactly who Jesus shows us through his life, death and resurrection. The writer of Psalm 121, writing 1000 years before the birth of Jesus, understood only too well that it is in God we need to trust, not human institutions, wealth and possessions; ultimately they will let us down. "I lift up my eyes to the hills. From where does my help come? My help comes from the Lord, who made heaven and earth. He will not let your foot be moved; he who keeps you will not slumber." (Psalm 121:1-3)

And so it is through Jesus we pray with confidence to the Father, that we would continually know His unfailing love and presence and that whatever the future might bring, peace beyond human understanding.

Yours in Christ, Philip



LOOE ROYAL BRITISH LEGION

Looe Poppy Appeal

The Looe Royal British Legion 2017/2018 Poppy Appeal collection, which ended in October 2018, collected £12,190.79. This was a record for the Looe Branch. This year's appeal has already exceeds last year's total with over £13,000 being raised so far. We would like to express thanks and appreciation to the members of the public, businesses and organisations for their generous help and donations. We would also like to thank all our members who gave up their time to help with the collection, with a special thank you to our Poppy Appeal organisers, David and Annette Bryan.

What is the Poppy Appeal?

The Royal British Legion, commonly known as the 'Legion', is the UK's leading Armed Forces charity and one of the country's largest membership organisations. The Poppy Appeal is the Legion's biggest fundraising event and raises around a third of the Legion's income. Although the appeal is ongoing, all year round, it is most prominent every year in November, the period of Remembrance. The poppy symbol is used as the poppy was the first flower to grow on the mud churned battlefields of World War 1 and is immortalised in the poem 'In Flanders Field'.

*In Flanders fields the poppies blow
Between the crosses, row on row.*

The Royal British Legion, and associated partner charities, provide financial, social and emotional support to members and veterans of the British Armed Forces, their families, dependants and carers. The needs of the Armed Forces community are complex, so partner charities and organisations can help offer advice and support on everything from post-traumatic stress disorder to housing.

How is the Poppy Appeal Spent?

From the Royal British Legion's latest published annual report, in 2017 the Legion expenditure included £57.4 million for welfare services and £30.9 million for care homes and break centres.

How Many People does the Royal British Legion Help?

A few examples of the help given by the Royal British in 2017 are:

- 85,118 people attended the Pop-In Centres, which offer a welcoming space for service personnel, veterans and their families to get practical help and advice, and members of the public can find out about the wide range of services and community activities provided by the Legion. Looe's nearest Centre is at 174 Armada Way, Plymouth, which is open 10am to 4pm, Monday to Friday.
- 2,459 families received support from the Benefits, Debt and Money Advice (BDMA) service, helping to secure £3.8 million in debt write-offs and new/increased statutory benefits. This service provides free, confidential advice about benefits that

you may be entitled to, assistance in making an appeal against a benefit decision and comprehensive advice for those in unmanageable debt.

- 4,683 households benefited from the Legion's Family Breaks Service. The Legion has six care homes catering for ex-service men and women and their partners. Situated around the country, they offer a wide range of services including four with specialist dementia care.
- Admiral Nurses supported 962 families who care for a beneficiary with dementia. The Legion works with Dementia UK to provide Admiral Nurses, a service that supports the carers of our beneficiaries who have dementia. The focus of the service is to maintain independence and improve the quality of life for carers and families and to provide the practical advice they need.
- As part of a group of military charities the Legion supported 260 families and friends of athletes who attended the Invictus Games. The games are an international event, created by Prince Harry, where wounded, injured or sick armed service personnel, or associated veterans, take part in competitive sports.

If you need help, then call the Contact Centre helpline on 0800 802 8080 from 8am to 8pm, 7 days a week (calls are free from UK landlines and main mobile networks).

Lest We Forget

In addition to supporting our serving and ex-service personnel and their families and dependants, the Legion has a duty, as set down in their Royal Charter, to ensure that the people of the United Kingdom remember all those who have lost their lives on active service to the Crown, and honours the service of the Armed Forces and veterans, and the contribution of their families. The Looe branch has researched the history of Looe's WW1 fallen as displayed on our war memorial (also available in the Looe Museum). We are now investigating our WW2 casualties and any information, particularly photographs, would be greatly appreciated. Please see our contact details below.

Your British Legion Needs You

Although the Legion is the United Kingdom's largest armed forces charity, we desperately need new members, either to actively help in our charity work or to give us moral support by just becoming a member. Contrary to popular belief, the Legion is not an ex-service organisation, full membership is open to everyone. The Looe branch of the RBL meets on the first Monday of every month in the ground floor bar of the Looe Social Club, West Looe Quay. Our friendly and informal meetings start at 7.30pm. Everyone is welcome, please come along and see what we do. Alternatively telephone our chairman, Louis Portman, on 01503 598432 or email us at looe.rbl@rbllooe.com.

David Welch
Looe Royal British Legion Membership Secretary



COMBINED MAYOR OF LOOE & CORNWALL COUNCIL REPORT: COUNCILLOR ARMAND TOMS

Christmas and New Year

Firstly, I would like to thank all those involved in delivering the Christmas events; although the weather was against us, once again things went well. Having spoken to many people, they enjoyed the events and the turnout at them all was very good. Because of the issues with the weather, it is proposed to change the format for next year combining all the events onto one day. Even at this late date, I wish everyone a Happy New Year.

Over the festive period I attended a number of events, including Sheila's School of Dancing Christmas show, which was excellent. Looe Academy held a prom night which was organised by the students to raise money for their prom later in the year. I was impressed by the skills shown by the students in organising such an event. The school also held a concert showing some exceptional singing and musical skills. As a town, we should be proud of their ability. Attending four events at the primary school, it was so good to see the school engaging with the community. The school entertained parents with a Nativity for reception and year one; a concert at the lifeboat station for years two, three and four; then a concert at the school for years five and six. All excellent and I will never forget the cockerel in the Nativity.

From Cornwall Council

ECONOMIC DEVELOPMENT SE CORNWALL

Over the last few years I have worked to bring forward development for the SE Cornwall area. Having kept a close eye on the EU Funding, I know that the main funding has gone to the Truro and Falmouth areas, with other areas getting some, but the East of Cornwall getting a very poor share. This is also the same for the LEP Funding, where more funding goes to the West of Cornwall. Taking this up with the Senior Officers of the Council I am pleased to say that a report on Economic Development in SE Cornwall will be coming forward to Cabinet soon.

CYCLE TRAIL

I have attended a meeting regarding the proposed Cycle Trail with Sue Brownlow and Looe Development Trust. This is moving forward and Cornwall Council are looking at this to be part of the South East Cornwall regeneration. Proposals will be coming forward in the next couple of months. This will be a boost to the area, with a trail being looked at from Cremyll to Looe and Looe to Lanhydrock.

LISKEARD LOOE COMMUNITY NETWORK

To carry the economic theme more locally, as Chairman of the Network I am setting up a small group from the panel to bring forward Economic Development plans for the area. It is important that we do not fall behind other areas and good well paid jobs are important for the area.

PARKING CONSULTATION

There is a Cornwall Council consultation on a revision of the parking charges within Cornwall Council car parks. They are proposing to increase charges by 3.1%, which locally will mean some charges go up slightly while others remain the same. There is a difference to the reserved parking and non-reserved and these proposals need to be looked at as some have seen larger increases, the link below will take you to the consultation; your views are appreciated.

<https://www.cornwall.gov.uk/transport-and-streets/parking/parking-consultations/>

HEALTH SCRUTINY CHAIRMAN

As the Health Scrutiny Chairman, I was delighted to be asked to attend the opening of three infection control rooms at St Michael's Hospital, Hayle which are to compliment the Orthopaedic ward. During the briefing prior to the opening I spoke to Professor Tim Briggs who has been leading the improvements in Orthopaedics nationally. He has visited every hospital in England and Scotland leading the improvements programme. When he started, infections were at .2% in the best hospitals and 15% in the worst. They are now at .2% to 5% and if they can all reduce to .2% the saving to the NHS is £300m which can deliver 60,000 more operations. Both he and the hospital staff are working hard to bring forward these changes and already there has been an excellent reduction in waiting time for the hospital. I thank them for their hard work.

I have also been involved in the selection process for the new Chairman of RCHT and joined the Safer Cornwall partnership. As a Councillor, it gives me great reward to be involved in Health and Social Care and I can't thank the staff in the NHS and Social Care enough for what they do.

Councillor Armand Toms
Mayor of Looe

DEFIBRILLATORS FOR LOOE

The project began eighteen months ago. Looe Harbour Commissioners were contacted by South West Ambulance Service Trust (SWAST) who advised that the defibrillator located on harbour land, was past its 'use by date' and needed replacement. There was only one other unit in the town at this time, which had been funded by Looe Pioneers.

Stephen Matthews (SWAST) stated:

Statistics show that if you can get a defibrillator on a patient within four minutes they would have a 70% chance of survival. Each minute after that a further 10% is lost. There are over 36,000 cardiac arrests outside of hospital each year in the U.K. The Government has set out targets for us to reach at least 75% of our highest priority calls within 8 minutes.

In an ideal world we would have defibrillators every 200 metres. If someone was to call 999 and require a defibrillator and if the nearest one is on our CAD (computer aided dispatch) and is less than 200 metres we would advise of its location. If the distance is greater, then we would advise the person to stay with the casualty and perform basic life support and we would help and assist over the phone.

Cardiac arrests do not only affect the elderly but any age of the spectrum. High footfall areas with busy seasonal population also statistically have shown a marked increase due to the sudden influx of people.

Tina Hicks (Chief Executive & Harbour Master Looe Harbour Commissioners)

I have had personal experience of heart problems within my close family and have also used a defibrillator 'for real' whilst serving as a First Responder and also as a member of the public.

I cannot find the words that would describe the importance of having this equipment available and feeling confident to use it, if it is needed.

Looe Harbour Commissioners agreed to head up a town project to get four more units funded and installed in key areas in Looe. The main town organisations and a number of local groups and clubs were contacted asking for support. The response was humbling. Funds being pledged for fourteen units!

In addition, Looe Pioneers (with the assistance of Looe Lions) also raised funds for three additional FLEET defibrillators.

As a town, we should feel proud that by working together, we have now installed seventeen defibrillators over a much-increased catchment area. Which is fantastic news for locals and visitors alike.

Not only have monetary contributions been made for this equipment, M&P Electricals have installed the units, donating their time free of charge, whilst a

number businesses and private home owners have agreed to allow a unit to be sited on privately owned land, in addition to covering the electrical cost required to operate the equipment.

The four year support package secured with SWAST includes a number of free Annual awareness sessions. Future dates will be advertised locally and on social media.

The Mayor of Looe Mr Armand Toms stated:

I would implore people to find the time to attend the awareness sessions. As a community, we need to overcome our fears and the misconception that by using these units, the operator can cause more damage to a patient than has already occurred. This is not the case. We all need to familiarize ourselves with this equipment so that if the need arises, we can do our best to save a life. It could be used to assist a total stranger or, a person that you love dearly. Most importantly, this equipment really can be the difference between 'life or death'.

Our Town and its visitors should be extremely grateful to the following organisations, groups and individuals, whose support has allowed this project to be delivered:

Looe Harbour Commissioners & staff
Looe Pioneers
Looe Lions
Looe Town Council
West Looe Town Trust
East Looe Town Trust
Looe Development Trust
BISAF (Looe)
The Looe Boat Owners Association
Cornwall Council
M&P Electrical
Mr & Mrs G Cairns (The Rivercroft Hotel)
Mr A. Stone (The Admiral Boscarne)
Mr J. Clemens (Sea Kitchen)
Mrs C. Armes
Mr H. Bowden
Looe Primary School
Looe Community Academy
Richardson's Funeral Directors
South West Ambulance Service

See back cover for map of Defibrillators in Looe

Why not tear off and keep it safe.

LOOE TOWN COUNCIL

Councillor Contact Telephone Numbers

Cllr David Bryan	01503 264130
Cllr Trevor Crane	01503 264535
Cllr Jimmy Dingle	01503 220038
Cllr Martin Gregory (Deputy Mayor)	01503 272796
Cllr Mrs Edwina Hannaford	01503 264160
Cllr Roy Hendy	01503 264905
Cllr James Lundy	01503 264405
Cllr Paul Penhaligan	01503 820171
	mobile: 07896 515334
Cllr Mrs Michala Powell	01503 265677
Cllr Mrs Beverley Richardson	07966 708152
Cllr Chris Rose	01503 265206
Cllr Michael Smith	07973 343242
Cllr Viv Sullivan	01503 262255
Cllr Armand Toms (Mayor)	01503 264823

Further contact information can be found on the Looe Town Council website:
www.looetowncouncil.gov.uk or by contacting us on 01503 262255.



NEED A CAR PARKING SPACE?

Car Parking spaces are available to rent at the Health Centre Patients Car Park
between the hours 6.30pm to 8.00am Monday to Friday,
all weekend and Bank Holidays.

For further information please contact:
Looe Town Council on 01503 262409 10am-2pm Monday to Friday
or email enquiries@looetowncouncil.gov.uk

Terms and Conditions apply.

LOOE TOURIST INFORMATION CENTRE

The Guildhall
Fore Street
East Looe PL13 1AA

For all your local information and holiday needs contact:

Tel: 01503 262072

email: looetic@btconnect.com

www.looeguide.co.uk

We are currently open unstaffed Monday to Friday 10am-2pm.

Holiday accommodation, OS maps, books, gifts,
Eden tickets, National Express tickets, travel information,
internet access, bus & train timetables, what's on
and much more.

CONTACT CORNWALL COUNCIL

General Enquiries (and all services)	0300 1234 100
Children, Schools and Families	0300 1234 101
Libraries	0300 1234 111
Benefits	0300 1234 121
Adult Care and Support	0300 1234 131
Refuse and Recycling	0300 1234 141
Planning	0300 1234 151
Housing	0300 1234 161
Council Tax and Business Rates	0300 1234 171
Registration Service	0300 1234 181
Trading Standards	0300 1234 191
Environmental Management	0300 1234 202
Environmental Health and Licensing	0300 1234 212
Roads, Transport and Parking	0300 1234 222
Fire and Community Safety	0300 1234 232

WEBSITE: www.cornwall.gov.uk

Calls to 03 numbers cost no more than a national rate call to an 01 or 02 number and must count towards any inclusive minutes in the same way as 01 and 02 calls.



**The Millpool Centre
in West Looe is a
popular venue for
wedding receptions,
with excellent
facilities and
stunning views.**



**For more details ring
01503 265947**



WEDDINGS IN THE GUILDHALL

**An historic and attractive venue in the heart of Looe
for your special day.**

From only £220

**Details including photographs available from
Judy Martin 01503 263709, email - eltt@yahoo.co.uk
or visit the East Looe Town Trust website - www.eastlooe towntrust.co.uk**

FREE TASTER SESSION

LOOE YOUTH THEATRE

EVERY FRIDAY

4.30-6.00 FOR 7-11YRS

6.00-7.30 FOR 11-16YRS

MILLPOOL CENTRE £5 PER CLASS

LOOEYOUTHTHEATRE@BTINTERNET.COM

OR CALL 07711 731235

FOR MORE INFORMATION





MILLPOOL CENTRE SOCIETIES DAY

*A GREAT OPPORTUNITY TO FIND INFO
ON CLUBS & ORGANISATIONS IN THE
LOOE AREA*

SATURDAY 16TH FEB 2019

From 10am to 4pm

The Millpool, West Looe

LOOE MARINE CONSERVATION GROUP

ITV Westcountry filmed our New Year beach clean at Hannafore – a great way to launch our NEW events calendar. The 2019 programme has expanded to appeal to wider interests and age ranges. We've introduced Night Rockpooling and Snorkel Safaris, a Film Night and an Art Exhibition in addition to top experts delivering talks, walks, beach cleans, socials, surveys and training events. So if you're interested in Looe's wildlife, keen to do something positive to help the environment, or want to meet likeminded people, we urge you to take out membership of Looe Marine Conservation Group. At only £6 annual subscription, it's a great way to support the volunteers who arrange and run most events free of charge.

Membership can be taken out via our website at www.looemarineconservation.org, where you can download our events list. We post key event details on our Facebook page but members also get privileged invites and all details via email. Come along to any of our monthly meetings held on the third Tuesday of each month in the Crew Room upstairs at the RNLI Station, East Looe from 6.30pm.

February Dates for Your Diary:

Thursday 14th 2.15-4.15pm at Millendreath. Love Your Beach Day. Show your love on Valentine's Day by joining volunteers to clean a local beach. All kit provided.

Tuesday 19th 6-8pm at Looe RNLI Station. Talk: Septimus: Life, Death and Immortality – Sue Sayer, Cornwall Seal Research Trust telling the epic story of Septimus – one of Cornwall's longest seals.

Thursday 21st 12-2pm Hannafore Beach Coastguard Station. Half Term Rockpool Ramble. Come and join local experts as we explore the rocky shore. Learn about starfish, crabs, fish, anemones and lots more at this educational event that is guaranteed to satisfy the whole family.

In March, we have a Pub Science Event, a beach clean, a talk, a film screening of 'A Plastic Ocean' (joint event with Looe Film Society) and a training session for beginners on rockpool wildlife, so visit our website to download the rest of this year's exciting events list from the What's On? page at looemarineconservation.org.

Do you know what to do?

In the mild and calm conditions this January, there's been a mass of dolphin sightings around Cornwall. But as we head toward the stormy season the numbers of stranded animals around the coast will start to increase, especially the numbers of cetaceans and live seal pups.

To report a live stranding, please call British Divers Marine Life Rescue on: 01825 765546 (office hours) or 07787 433412 (out of hours).

To report a washed up dead animal, call the Marine Strandings Network at CWT: 0345 201 2626

Gill Bridges On Behalf of Looe Marine Conservation Group
Facebook: www.facebook.com/looemarineconservationgroup
Twitter: www.twitter.com/LooeMCG
Website: www.looemarineconservation.org

The First & Last – Food2Go!

Situated in the taxi shop
at end of East Looe Bridge

Grab a Barista BEAN to cup
FAIR TRADE coffee



Freshly prepared Paninis
with scrumptious fillings
Cheese on toast
Hot buttered toast /
teacakes / crumpets
& much more

JUST GRAB & GO!

Larsson's Licensed Coffee House & Crêperie



A good place to meet up with friends
~
A great place to drink the finest
Italian coffee this side of the Alps ~
An eclectic place to eat authentic
French pancakes

Larsson's for something different

Eat in, Outside or Takeaway

7, Buller Street
E.Looe
PL13 1AS

Private Dinner Parties also available

Phone for details: 01503 265368

A taste of Europe in Cornwall

It's a work of art

www.larssonscoffeehouse.com

Tina's Domestics

Cleaning

Ironing

Light gardening

Reasonable rates

Reliable and trustworthy

Good references

Call Tina on

07938996911

J.G. Car Body Repairs



Contact Joe on:

01503 241020

07778 527226

jgearbodyrepairs@hotmail.co.uk

- All Bodywork, Repairs and Spray-work.
- Free Estimates.
- M.O.T. Welding.
- from Bumper Scuffs to Resprays.
- No job too small.

Nikki Astell-Burt
LADY - PAINTER AND
DECORATOR
(CITB Trained)



INTERIOR RENOVATION
ARTIST &
Wallpapering skills

07745769737

nnbutcher@gmail.com



PURELY CORNISH
The Farm shop & Delicatessen

**Creating beautiful bespoke
Cornish Hampers**



**Products from over 30
Cornish Suppliers**

from Tarquins Gin and Camel Valley to
Jo Downs Glass and St Eval Candles



18 Fore Street, East Looe

www.purelycornish.co.uk **01503 262680**



For all your fancy dress, joke and party requirements.

Jokes, tricks and gimmicks for all ages.

Hair and body make-up, costumes and costume accessories

False body parts, wigs, beards, 'tashes, hats, masks,
removeable tattoos etc..

Suppliers of costumes and
accessories for all occasions

For a great time
on your holiday
visit

The Joke Shop

Fore Street, East Looe

Tel: 01503 262284

In conjunction with



For gifts, toys,
souvenirs, jewellery etc.

THE
DOG HOUSE
LOOE
GROOM.WALK.STAY
01503 269251



Professional Dog Grooming, Walking, Day-Care
and Boarding Services based in West Looe
www.thedoghouselooe.co.uk

Looe Allotment Association



Ever thought about
an allotment?

Plots available from
£40 a year

For more information, email
looeallotments@gmail.com

If you would rather speak to
someone, please contact
Looe Town Council
on 01503 262255

Grow your own
vegetables, fruit and
herbs whilst enjoying
views across the
beautiful Cornish
countryside



YOUR LOCAL VET IN LOOE

Vet in practice all day for consultations and friendly advice
for all your pets

We also stock food, toys and a range of health care products

Phone 01503 263773 for appointments & 24h emergencies

Find us on the Millpool Car Park!

Part of



LOOE JAZZ CLUB at Looe Golf Club

Enjoy New Orleans style jazz?

Want to hear some live music?

Upcoming dates:

Saturday 9th February – Frog Island Band

Saturday 9th March – Dart Valley Stompers

Saturday 13th April – Savannah

**Entry £21 including supper
Advance bookings only**

Contact: Elaine Warne

ewarne18@btinternet.com or 01503263816

LOOE SCOTTISH COUNTRY DANCERS

Betty Collins, our founder, died 10th December, aged 91. We shall always be grateful to her for our club which is enjoyed so much by all. It takes a special person to start a new club and get it up and running. Not only did the club take part in the Furry Dance but also for many years took part in the Carnival. She was a vibrant happy person who brought joy to many. We still run the club "her way", relaxed and happy. Our 30th Anniversary was celebrated on 28th January when we all had a special lunch together (the actual date being 23rd January).

LOOE VALLEY SINGERS

Following a busy Christmas period, the choir will resume rehearsals at the end of January. The concert diary is filling up, with events planned at Landulph, the RNLI and the Quayside Centre.

The choir always welcomes new ladies and will be at the Societies Day in the Millpool Centre on February 16th. Come and have a chat to us, we'd love to meet you.



Wednesday 20th February – The Children Act (12A)

Doors open: 7pm. Starts 7.30.



As her marriage to flounders, eminent High Court judge Fiona Maye has a life-changing decision to make at work – should she force a teenage boy, Adam, to have the blood transfusion that will save his life? Her unorthodox visit to his hospital bedside has a profound impact on them both, stirring strong new emotions in the boy and long-buried feelings in her. 105 minutes

Thursday 7th March – A Plastic Ocean (PG)

Joint meeting with Looe Marine Conservation Group.

Doors open: 7pm. Starts 7.30. Free admission to this show.



A PLASTIC OCEAN begins when journalist Craig Leeson, searching for the elusive Blue Whale, discovers plastic waste in what should be pristine ocean. In this adventure documentary, Craig teams up with free diver Tanya Streeter and an international team of scientists and researchers, and they travel to twenty locations around the world over the next four years to explore the fragile state of

our oceans, uncover alarming truths about plastic pollution, and reveal working solutions that can be put into immediate effect. 102 mins.

Wednesday 20th March – Film to be announced.

Doors open: 7pm. Starts 7.30.

Watch for details in our brochure or on our website.

All films at: The Community Hall at Looe Children's Centre,
Trewint Crescent, Barbican, LOOE PL13 1ET

Tickets: on the night at the door, online via our website cinemabythesea.org.uk or from Looe TIC, The Guild Hall, Fore St, East Looe.



LOOE BOAT OWNERS' ASSOCIATION FORTHCOMING EVENTS



All at Looe Sailing Club at 7.30pm unless otherwise stated.

February	Thursday 21 st	Skittles and Supper
March	Thursday 21 st	Sea Safety and Supper
	Saturday 23 rd	Harbour Clean 12.30pm
April	Friday 26 th	AGM and Dinner. Venue TBA
May	Sunday 19 th - Thursday 23 rd	Trip to Santander
	Tuesday 28 th	Quiz and Supper
June	Sunday 9 th	Looe Raft Race 11.30am
	Saturday 15 th	Looe River Safari/BBQ 4pm

For further information please go to: www.lboa.co.uk.

LOOE SAILING CLUB

With the sailing season over, most of the Club activities have taken place in the clubhouse. However, November saw a large number of members descend on the Hannafore Point Hotel for the annual dinner and dance. Following the meal, Commodore Enys Dan summed up the highlights of another successful season, including David and Chris Jackman's success in winning the Enterprise National Championships, before inviting his wife Janet to present the end of season trophies. The evening concluded with dancing to music by Jaded Angel.

Other events have included a games evening run by Rear Commodore Ben Crabb, the Christmas Draw and very sociable get-togethers on both Christmas Eve and New Year's Eve with live music accompaniment.

The New Year gets underway with a sailing members meeting on Saturday 26th January. There will be a registration evening on Saturday 23rd February, with racing commencing on Saturday 23rd March.

Plans are already underway for this year's summer championships in August; firstly the Merlin Rockets will be visiting Looe for their National Championships; this will be followed by the turn of Looe to stage the Redwing National Championships.



West Looe General Stores

Quality Grocers Delicatessen

Beers Wines Spirits

Fore Street West Looe
01503 262842

A & R PALMER Coal Merchant

Nothing beats a real fire!

Coal
Smokeless fuels
Kindling
Pre-packed Coal



10kg
20kg
25kg
Open Sack 50kg



01503 220331

est. 1952 - Support a local family



TAX ACCOUNTING SERVICES

Penny Cassidy MAAT

Over 25 years experience in the preparation of

- ✓ Annual accounts
- ✓ Tax returns
- ✓ Book keeping
- ✓ VAT
- ✓ PAYE

For a free initial consultation or home visit
Call **07967 651777**

GENTLE EXERCISE CLASS

MOVEMENT WITH MUSIC, ACTIVITIES & FUN

FEEL BETTER & GET FITTER

GO AT YOUR OWN PACE

IMPROVE FLEXIBILITY, STRENGTH & BALANCE

WITH

LOOE BREATHERS



MILLPOOL CENTRE, LOOE
TUESDAYS 2pm for 2.15pm
ONLY £2.50 PER CLASS



CALL Denise Bond 07779 059868

TAI CHI & QIGONG

With Kath Revell
Ninja Granny

01579 340591
07729 907056

WEDNESDAYS
7.30-9PM
MILLPOOL CENTRE
LOOE

OTHER CLASSES IN:
LISKEARD
UPTON CROSS
DOBWALLS
TREWIDLAND

ninjagranny20@gmail.com



www.ninjagranny.org



YOGA with MARIA

Call: 01503 263505

07980 533 050

No Mans Land Village Hall

Monday: 10am - Tuesday 6pm

Millpool Centre: Looe

Monday: 6pm

Wednesday 5.45pm

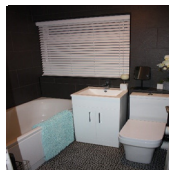


Strictly Plumbing & Heating Ltd

Central Heating, Bathroom Installation, Tiling, Flooring,
Plumbing Repairs, Toilets, Taps, Showers, Leaks etc.
Property Maintenance undertaken. 30 years' experience.
Approved Aqualisa Shower Installer.

Creating A-Ma-Zing Bathrooms

**Michael
Green**



Free Estimates. No Call out fees. Based in Seaton Cornwall.

Tel: 01503 250047 - Mobile: 07588 445431 - strictlyplumbing7@gmail.com

Editorial & Advertising: Elaine Warne
ewarne18@btinternet.com
01503 263816

Desktop Publishing: Kerry Newman

Advertising costs: Commercial annual rates (for six editions):
1/8 page £54, 1/4 page £90, 1/2 page £162,
full page £320. Subject to review.
Single edition rates upon application.
Voluntary organisations/charities: free.

Next deadline: April/May edition: 15th March 2019

Published by: Looe Development Trust

Printed by: Launceston Print Ltd.

Community News tries to be as accurate as possible in the information received from organisations. However, it is always advisable to contact the organiser(s) directly if confirmation and further details are required.



Photo from Looe Town Council website

Do you have a property to sell or rent in the local area ?

**For a FREE, no obligation, market appraisal
call your local independent Estate & Letting Agent**



01503 265 265
property@seasonsestateagents.co.uk
www.seasonsestateagents.co.uk

TAKE THE TRAIN FROM

LOOE

- UNDER 5s **FREE**
- 5-15YR OLDS **HALF PRICE**
- SMALL GROUPS **GET 1/3 OFF**



GREAT VALUE OFF-PEAK DAY RETURN FARES

Looe to **Liskeard**

£4^{.70}

Looe to **Plymouth**

£6^{.30}

Looe to **Truro**

£11^{.00}

Valid after the morning peak Monday-Friday and any time at weekends. Children aged 5-15 go half price and under 5s go free (max 4). Groups of 3 to 9 get a third off adult Off-Peak Day Return fares on Great Western Railway trains.

**TRAINS RUN SIX DAYS A WEEK, ALL YEAR ROUND.
SUNDAY TRAINS RUN FROM APRIL TO OCTOBER.**

**LOOK UP TIMES AT GWR.COM
OR CALL 03457 484950**

WORK IN PLYMOUTH? **SAVE WITH A SEASON TICKET**

A Seven Day Season Ticket from Looe to Plymouth costs just **£24.10** and can be used on any train in either direction. Season tickets can be bought from the Conductor on the Looe Valley Line train. Longer period season tickets are also available, ask at a staffed station for details or call 03457 000 125.

GWR | Great Western Railway

**Devon & Cornwall
RAIL PARTNERSHIP**

DEFIBRILLATORS IN LOOE



Key

- Road =
- Coastal Path =
- Beach =
- Land =
- Water =
- Train Line =
- Defibrillator Locations =

SWAST

- 1 = Train Station
- 2 = Rivercroft Hotel
- 3 = Harbour Car Park Hut
- 4 = East Looe Town Trust Wishing Well
- 5 = Lower Quay Store
- 6 = The Admiral Boscarn
- 7 = Plaidy (opposite Harvey Bowdens Garage)
- 8 = Looe Primary School
- 9 = Richardsons Funeral Directors
- 10 = Looe Community Academy
- 11 = Millpool Carpark (opposite the Chandlery)
- 12 = Scout Hut
- 13 = West Looe Hill (higher side of WLTT car park)
- 14 = Hannaford Point Hotel (Sea Kitchen)

FLEET

- 15 = RNLI Lifeboat Station
- 16 = Quayside Centre
- 17 = Coastguard Station